



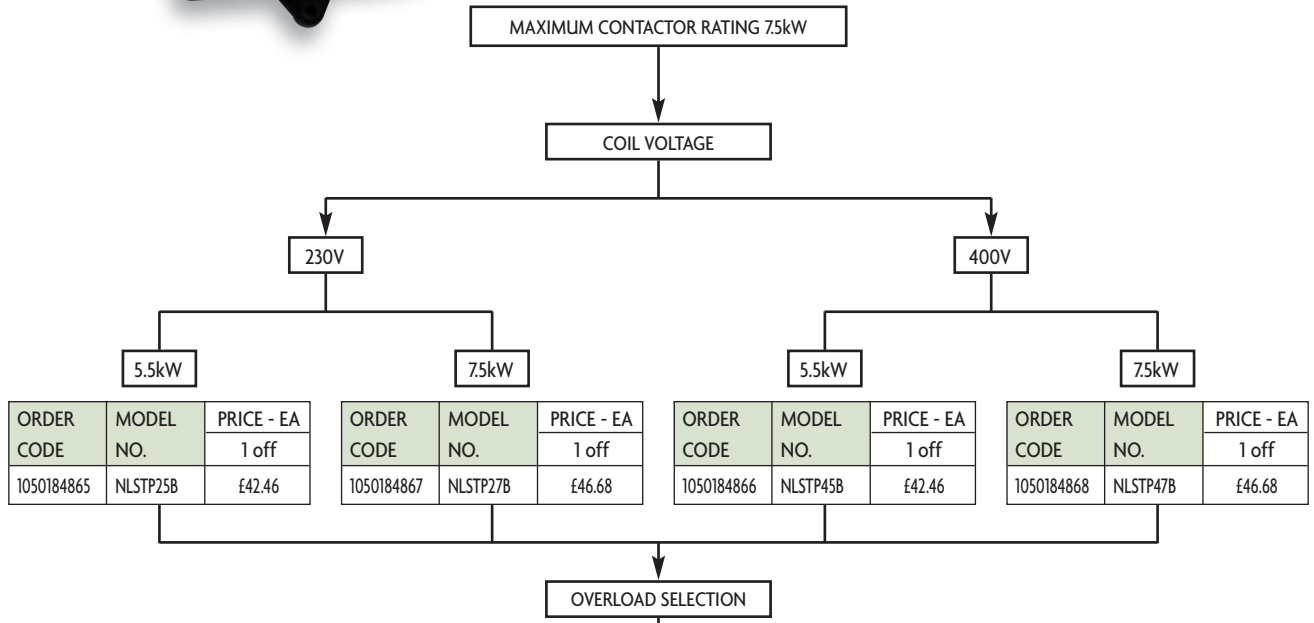
# Industrial Control

<b>DOL Starters</b>	<b>282-283</b>
<b>Star-Delta Starters</b>	<b>284</b>
<b>Enclosed Contactors &amp; Push Button Stations</b>	<b>285</b>
<b>Enclosures</b>	<b>286-288</b>
<b>Terminals – Rail Mounted</b>	<b>289-290</b>
<b>Panel Transformers</b>	<b>291</b>
<b>Control Switches</b>	<b>292</b>
<b>Switch Disconnects</b>	<b>292-293</b>
<b>Industrial Relays &amp; Timers</b>	<b>294-295</b>
<b>Cable Management</b>	<b>296</b>

## DOL STARTERS - MOULDED ENCLOSED



- Internal assembly DIN rail mount.
- Rigid plastic base.
- Increased internal dimensions to improve access and installation.
- Separate neutral and earth terminals.
- Knockout for additional pilot devices.
- All screws are x-head, one screwdriver needed to install.
- A comprehensive range of Newlec overloads is available to suit applications from 1.0A to 19A F.L.C. - see selection chart below.
- IP66 rating.
- Manufactured to EN 60947-4-1/IEC 947-4-1 and EN 60204-1/IEC 60204-1.



Select overload from this chart

ORDER CODE	MODEL NO.	FULL LOAD CURRENT (Amps)		APPROX. MOTOR RATING AC3 400V/3P		PRICE - EA 1 off
		min.	max.	(kW)	(hp)	
1050184879	NLOLB1	1.0	1.4	0.37	0.55	£28.50
1050184880	NLOLB2	1.3	1.8	0.55	0.75	£28.84
1050184881	NLOLB3	1.7	2.4	0.75	1.0	£28.84
1050184882	NLOLB4	2.2	3.1	1.1	1.5	£28.84
1050184883	NLOLB5	2.8	4.0	1.5	2.0	£28.84
1050184884	NLOLB6	3.5	5.0	1.8	2.5	£28.84
1050184885	NLOLB7	4.5	6.5	2.2	3.0	£32.18
1050184886	NLOLB8	6.0	8.5	3.7	5.0	£32.18
1050184887	NLOLB9	7.5	11	4.0	5.5	£32.52
1050184888	NLOLB10	10	14	5.5	7.5	£32.52
1050190139	NLOLB11*	13	19	7.5	10	£32.52

\*For use with 75kW only.

Select overload from this chart

ORDER CODE	MODEL NO.	FULL LOAD CURRENT (Amps)		APPROX. MOTOR RATING 230V/SINGLE PHASE		PRICE - EA 1 off
		min.	max.	(kW)	(hp)	
1050184880	NLOLB2	1.3	1.8	0.07	0.09	£28.84
1050184881	NLOLB3	1.7	2.4	0.1	0.125	£28.84
1050184882	NLOLB4	2.2	3.1	0.18	0.25	£28.84
1050184883	NLOLB5	2.8	4.0	0.37	0.5	£28.84
1050184884	NLOLB6	3.5	5.0	0.37	0.5	£28.84
1050184885	NLOLB7	4.5	6.5	0.55	0.75	£32.18
1050184886	NLOLB8	6.0	8.5	0.75	1.0	£32.18
1050184887	NLOLB9	7.5	11	1.5	2.0	£32.52
1050184888	NLOLB10	10	14	1.5	2.0	£32.52
1050190139	NLOLB11*	13	19	2.2	3.0	£32.52

\*For use with 75kW only.

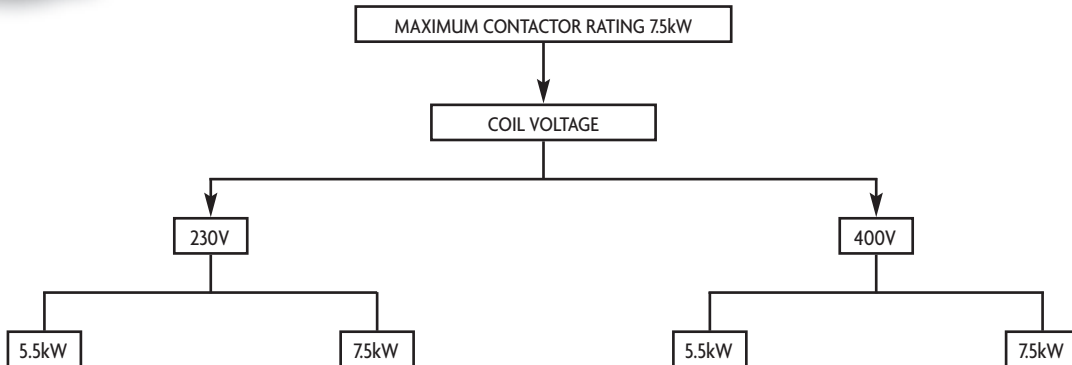


All prices subject to VAT at 17.5%.

DOL STARTERS - SHEET STEEL ENCLOSED



- Contactor overload assembly DIN rail mount.
- Quick release catches on enclosure.
- Top knockouts placed over incoming switch.
- Increased internal dimensions to improve access and installation.
- A comprehensive range of Newlec overloads is available to suit applications from 1.0A to 19A F.L.C. - see selection chart below.
- IP65 rating.
- Manufactured to EN 60947-4-1/IEC 947-4-1 and EN 60204-1/IEC 60204-1.



Without Isolator

ORDER CODE	MODEL NO.	PRICE - EA 1 off
1050184869	NLSTM25B	£61.52

ORDER CODE	MODEL NO.	PRICE - EA 1 off
1050184871	NLSTM27B	£63.91

ORDER CODE	MODEL NO.	PRICE - EA 1 off
1050184870	NLSTM45B	£61.52

ORDER CODE	MODEL NO.	PRICE - EA 1 off
1050184872	NLSTM47B	£63.91

With Built-in Isolator

ORDER CODE	MODEL NO.	PRICE - EA 1 off
1050184873	NLSTM25BSW	£138.52

ORDER CODE	MODEL NO.	PRICE - EA 1 off
1050184875	NLSTM27BSW	£144.99

ORDER CODE	MODEL NO.	PRICE - EA 1 off
1050184874	NLSTM45BSW	£138.52

ORDER CODE	MODEL NO.	PRICE - EA 1 off
1050184876	NLSTM47BSW	£144.99



OVERLOAD SELECTION

3 PHASE MOTOR

SINGLE PHASE MOTOR

Select overload from this chart

ORDER CODE	MODEL NO.	FULL LOAD CURRENT (Amps)		APPROX. MOTOR RATING AC3 400V/3P (kW) (hp)		PRICE - EA 1 off
		min.	max.	(kW)	(hp)	
1050184879	NLOLB1	1.0	1.4	0.37	0.55	£28.50
1050184880	NLOLB2	1.3	1.8	0.55	0.75	£28.84
1050184881	NLOLB3	1.7	2.4	0.75	1.0	£28.84
1050184882	NLOLB4	2.2	3.1	1.1	1.5	£28.84
1050184883	NLOLB5	2.8	4.0	1.5	2.0	£28.84
1050184884	NLOLB6	3.5	5.0	1.8	2.5	£28.84
1050184885	NLOLB7	4.5	6.5	2.2	3.0	£32.18
1050184886	NLOLB8	6.0	8.5	3.7	5.0	£32.18
1050184887	NLOLB9	7.5	11	4.0	5.5	£32.52
1050184888	NLOLB10	10	14	5.5	7.5	£32.52
1050190139	NLOLB11*	13	19	7.5	10	£32.52

\*For use with 7.5kW only.

Select overload from this chart

ORDER CODE	MODEL NO.	FULL LOAD CURRENT (Amps)		APPROX. MOTOR RATING 230V/SINGLE PHASE (kW) (hp)		PRICE - EA 1 off
		min.	max.	(kW)	(hp)	
1050184880	NLOLB2	1.3	1.8	0.07	0.09	£28.84
1050184881	NLOLB3	1.7	2.4	0.1	0.125	£28.84
1050184882	NLOLB4	2.2	3.1	0.18	0.25	£28.84
1050184883	NLOLB5	2.8	4.0	0.37	0.5	£28.84
1050184884	NLOLB6	3.5	5.0	0.37	0.5	£28.84
1050184885	NLOLB7	4.5	6.5	0.55	0.75	£32.18
1050184886	NLOLB8	6.0	8.5	0.75	1.0	£32.18
1050184887	NLOLB9	7.5	11	1.5	2.0	£32.52
1050184888	NLOLB10	10	14	1.5	2.0	£32.52
1050190139	NLOLB11*	13	19	2.2	3.0	£32.52

\*For use with 7.5kW only.

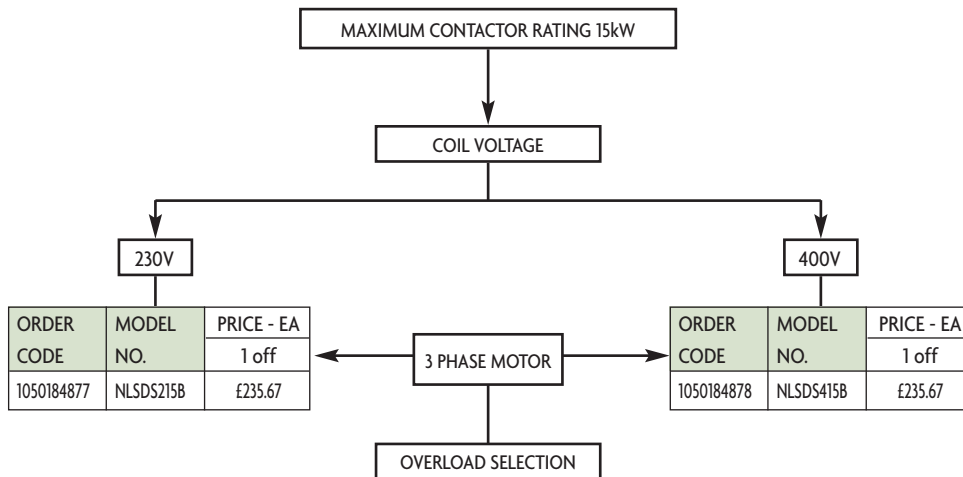


All prices subject to VAT at 17.5%.

## STAR-DELTA STARTERS - SHEET STEEL ENCLOSED



- Offered in either 230V or 400V 50Hz coil voltages.
- Contactor layout gives easy access.
- The Newlec range of thermal overloads can be fitted which allows operation from 1.3A to 19A in delta loop.
- Incoming terminals provided - for clarity, all incoming and outgoing terminals are labelled.
- Top knockouts placed over incoming terminals.
- Quick release catches on enclosure.
- IP65 rating.
- Manufactured to EN 60947-4-1/IEC 947-4-1 and EN 60204-1/IEC 60204-1.



OVERLOAD SELECTION

Select overload from this chart

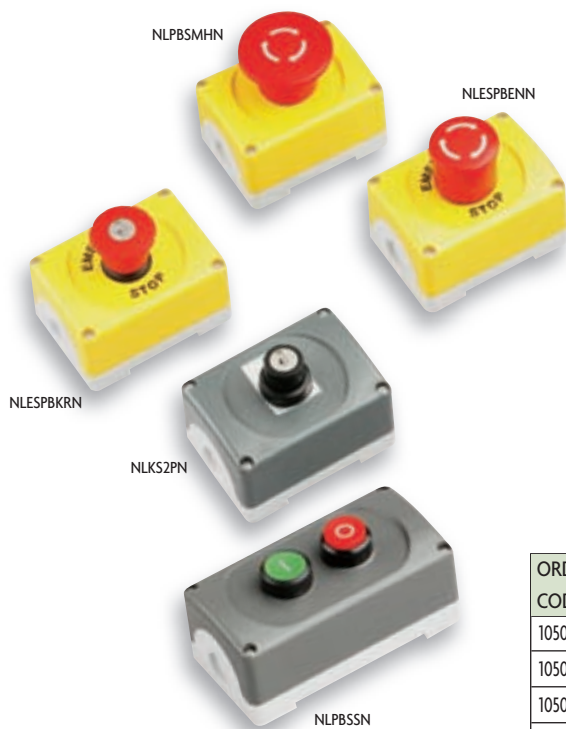
ORDER CODE	MODEL NO.	OVERLOAD IN DELTA-LOOP 0.58 OF FLC (Amps)		APPROX. MOTOR RATING AC3 400V/3PH		PRICE - EA 1 off
		min.	max.	(kW)	(hp)	
1050184880	NLOLB2	1.3	1.8	1.1	1.5	£28.84
1050184881	NLOLB3	1.7	2.4	1.5	2.0	£28.84
1050184882	NLOLB4	2.2	3.1	2.2	3.0	£28.84
1050184883	NLOLB5	2.8	4.0	3.0	4.0	£28.84
1050184884	NLOLB6	3.5	5.0	3.5	5.0	£28.84
1050184885	NLOLB7	4.5	6.5	4.5	6.5	£32.18
1050184886	NLOLB8	6.0	8.5	6.0	8.5	£32.18
1050184887	NLOLB9	7.5	11	7.5	11	£32.52
1050184888	NLOLB10	10	14	10	14	£32.52
1050190139	NLOLB11	13	19	13	19	£32.52



1 Year

All prices subject to VAT at 17.5%.

## PUSH BUTTON STATIONS



- 22mm push button range made for tough industrial environments.
- Insulated device.
- Snap-in colour coded auxiliaries.
- Common auxiliaries throughout range.
- Self wiping action for high performance in low energy circuits.
- Open sided back box for ease of wiring.
- E stop complies to EN 418, IEC 947-5-1.
- Meets all major international standards.
- 'E stop' legend available for 90° mounting.

CE

ORDER CODE	MODEL NO.	DESCRIPTION	IP RATING	PRICE - EA 1 off
1050316382	NLPBSN	Enclosed Stop - 37mm Head	65	£27.16
1050316383	NLPBSMHN	Enclosed Stop - 50mm Mushroom Head	66	£39.68
1050316380	NLPBGN	Enclosed Start	66	£21.85
1050316381	NLPBSSN	Enclosed Start/Stop	66	£36.82
1050316385	NLESPBENN	Enclosed Emergency Stop - 37mm Head	65	£35.16
1050316376	NLESPBKRN	Enclosed Emergency Stop with Key Release - 37mm Head	66	£40.38
1050326818	NLESTOPLEGEND	70mm Emergency Stop Legend Plate	N/A	£4.90
1050316377	NLKS2PN	Enclosed 2 Position Key Switch	66	£30.93
1050316379	NLPBCNNO	Push Button Contact - 1 Normally Open	20	£5.84
1050316378	NLPBCNNC	Push Button Contact - 1 Normally Closed	20	£5.84



## EMERGENCY STOP STATION - STAINLESS STEEL



- Suitable for food or chemical industries - 316 grade brushed stainless steel.
- Emergency stop button is EN 418 compliant.
- One normally closed contact fitted - extra contacts available.
- External mounting brackets maintain IP65 integrity.
- Stop button accepts up to 3 contact blocks in total (2 additional blocks).
- IEC947-5-1.

CE

ORDER CODE	MODEL NO.	DESCRIPTION	PRICE - EA 1 off
1050316384	NLESPBSSN	Emergency Stop Push Button	£86.04



## CONTACTORS - ENCLOSED



- A range of enclosed contactors rated up to 100A AC1 fitted with a 230V 50Hz coil.
- Supplied complete with neutral terminal strip.
- Quick release catches on enclosure.
- Internal assembly DIN rail mount.
- Auxiliaries can be fitted.
- IP65 rating.
- Manufactured to IEC 947-4-1 and EN 60947-4-1.



ORDER CODE	MODEL NO.	LOAD (Amps)		NO. OF POLES	PRICE - EA 1 off
		LIGHTING	HEATING		
1050151206	NLCON25/4N	15	25	2	£61.01
1050151207	NLCON45/4N	30	45	4	£87.08
1050151208	NLCON63/3N	40	63	3	£201.88
1050151199	NLCON100/3N	70	100	3	£261.71



# we've got recyclability

Ask at your local branch for our range of services

- \* trade counter recycling
- \* direct recycling

All prices subject to VAT at 17.5%.

## ENCLOSURES - SHEET STEEL



- Manufactured from a continuous length of 1.2mm sheet steel.
- Standard grey, RAL 7032 colour - 60 microns thick.
- Polyurethane gasket and rain gutter.
- Perforated door reinforcement allows for the fixing of extra equipment.
- Reversible door.
- Double bar door lock.
- Includes galvanised steel chassis plate.
- Earth continuity studs.
- IP66 rating.



NB. Other larger sizes available on request.

ORDER CODE	MODEL NO.	ORDER CODE	MODEL NO.	NO. OF LOCKS	EXTERNAL DIMENSIONS (mm)	WEIGHT (kg)	PRICE - EA 1 off
RAL 7035*		RAL 7032					
1051013419	NLME302515B	1050150971	NLME302515A	1	300 x 250 x 150	4.2	£41.30
1051013418	NLME303020B	1050344474	NLME303020A	1	300 x 300 x 200	7.2	£48.02
1051013415	NLME403020B	1050150972	NLME403020A	1	400 x 300 x 200	6.8	£55.23
1051013412	NLME404020B	1050344475	NLME404020A	1	400 x 400 x 200	10.2	£63.47
1051013417	NLME504025B	1050150973	NLME504025A	2	500 x 400 x 250	11	£78.13
1051013414	NLME505025B	1050344476	NLME505025A	2	500 x 500 x 250	15.6	£100.25
1051013411	NLME604020B	1050151830	NLME604020A	2	600 x 400 x 200	13.9	£75.61
1051013416	NLME606025B	1050344477	NLME606025A	2	600 x 600 x 250	23.7	£112.47
1051013413	NLME806030B	1050150974	NLME806030A	2	800 x 600 x 300	26.3	£152.70

## Accessories

ORDER CODE	MODEL NO.	ORDER CODE	MODEL NO.	DESCRIPTION	PRICE - EA 1 off
1051013420	NLMELOCKB	1050150975	NLMELOCK	Replacement Lock and Key	£8.47
1050150976	NLMEMB	1050150976	NLMEMB	Wall Mounting Bracket	£4.91

## ENCLOSURES - GRP



- Glass fibre reinforced polyester.
- IK10 impact resistant.
- Standard grey, RAL 7032 colour, approval - UL50.
- Includes galvanised steel chassis plate and built-in door hood.
- Reversible door.
- Stable to ultraviolet rays.
- Corrosion resistant.
- Self extinguishing.
- Max working temp range -50°C to +150°C.
- IP66 rating.
- Manufactured to EN 60439-1/IEC 439-1.



ORDER CODE	MODEL NO.	EXTERNAL DIMENSIONS (mm)	WEIGHT (kg)	PRICE - EA 1 off
1050151844	NLGRP302015	310 x 215 x 160	1.9	£47.99
1050151845	NLGRP403020	430 x 330 x 200	5.9	£80.43
1050151846	NLGRP504020	530 x 430 x 200	8.8	£109.00
1050151847	NLGRP604025	647 x 436 x 250	11.5	£126.60
1050151848	NLGRP705030	747 x 536 x 300	16.7	£179.65
1050344478	NLGRP806030	847 x 636 x 300	24.8	£229.03

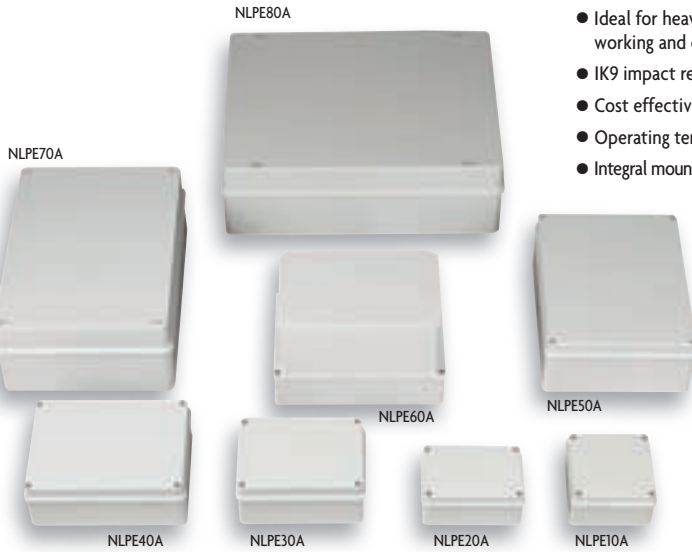
## Accessories

ORDER CODE	MODEL NO.	DESCRIPTION	PRICE - EA 1 off
1050151849	NLGRPLOCK	Replacement Lock and Key	£11.19
1050335057	NLGRPBRKT1	Wall Bracket for NLGRP302015	£8.83
1050335058	NLGRPBRKT2	Wall Bracket for all other Enclosures	£8.83

All prices subject to VAT at 17.5%.

## ENCLOSURES - MOULDED AND MOUNTING PLATES

- Watertight moulded enclosures.
- Ideal for heavy duty applications in difficult working and climatic conditions.
- IK9 impact resistance.
- Cost effective for general use.
- Operating temperature: -15°C to +60°C.
- Integral mounting grids and integral sealing gasket.
- RAL7035 Grey.
- Back mounting plate also available.
- Stainless steel, captive screws.
- IP56 rating.
- Compliance with IEC670.



ORDER CODE	MODEL NO.	EXTERNAL DIMENSIONS (mm)	HINGED LID	PRICE - EA 1 off
1050151831	NLPE10A	100 x 100 x 60	✗	£3.12
1050151832	NLPE20A	120 x 80 x 60	✗	£3.30
1050151833	NLPE30A	150 x 100 x 60	✗	£4.82
1050151834	NLPE40A	190 x 140 x 70	✗	£8.94
1050151835	NLPE50A	240 x 190 x 90	✗	£12.95
1050151836	NLPE60A	220 x 150 x 150	✗	£16.24
1050151837	NLPE70A	300 x 220 x 120	✓	£23.65
1050151838	NLPE80A	380 x 300 x 120	✓	£32.18

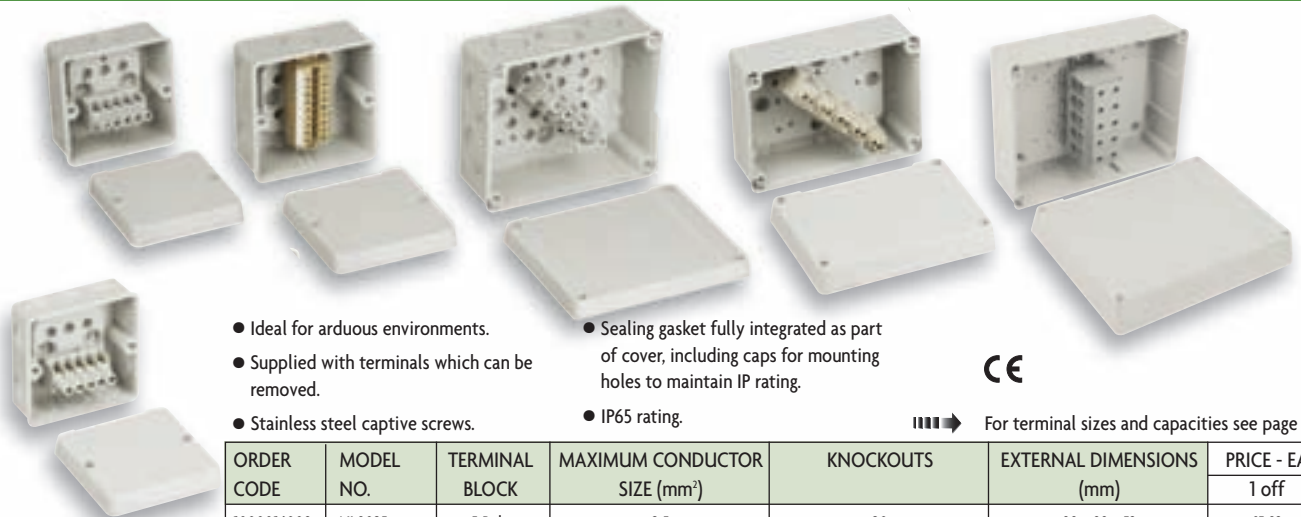


- Zinc coated, low carbon steel.
- Manufactured to EN 10142.



ORDER CODE	MODEL NO.	TO FIT MOULDED ENCLOSURE	SIZE (mm)	PRICE - EA 1 off
1050151839	NLPEBP40	NLPE40A	190 x 140	£3.84
1050151840	NLPEBP50	NLPE50A	240 x 190	£4.59
1050151841	NLPEBP60	NLPE60A	220 x 150	£3.59
1050151842	NLPEBP70	NLPE70A	300 x 220	£5.71
1050151843	NLPEBP80	NLPE80A	380 x 300	£12.33

## JUNCTION BOXES - IP RATED



- Ideal for arduous environments.
- Supplied with terminals which can be removed.
- Stainless steel captive screws.
- Sealing gasket fully integrated as part of cover, including caps for mounting holes to maintain IP rating.
- IP65 rating.



For terminal sizes and capacities see page 385

ORDER CODE	MODEL NO.	TERMINAL BLOCK	MAXIMUM CONDUCTOR SIZE (mm <sup>2</sup> )	KNOCKOUTS	EXTERNAL DIMENSIONS (mm)	PRICE - EA 1 off
1000016008	NL9025	5 Pole	2.5	20	88 x 88 x 53	£5.93
1000009020	NL9325	5 Pole	2.5	Self-Seal Neoprene Cable Seals	88 x 88 x 47	£5.56
1050151877	NL9041	10 Pole	2.5	25	98 x 98 x 61	£36.17
1000016009	NL9045	5 Pole	4	25	98 x 98 x 61	£8.15
1000016010	NL9065	5 Pole	6	25/32	138 x 119 x 70	£12.00
1000009021	NL9105	5 Pole	10	-	117 x 125 x 82	£20.45
1050151876	NL9145	5 Pole	4	20	98 x 98 x 58	£8.13
1000009022	NL9255	5 Pole	16/25	-	200 x 160 x 98	£35.03
1051011557	NL9355	5 Pole	35/50	-	260 x 210 x 116	£102.11

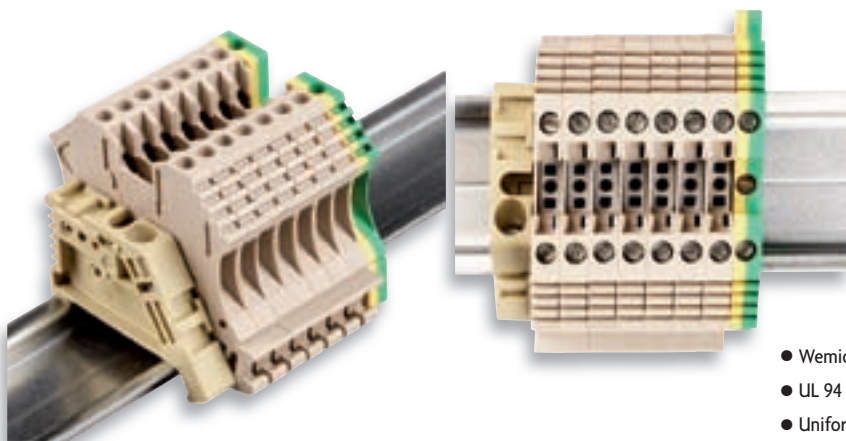


1 Year

**NEW**

All prices subject to VAT at 17.5%.

## TERMINAL PACKS - 35mm TOP HAT RAIL



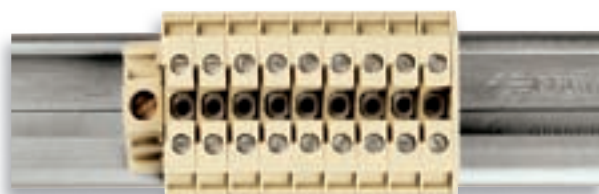
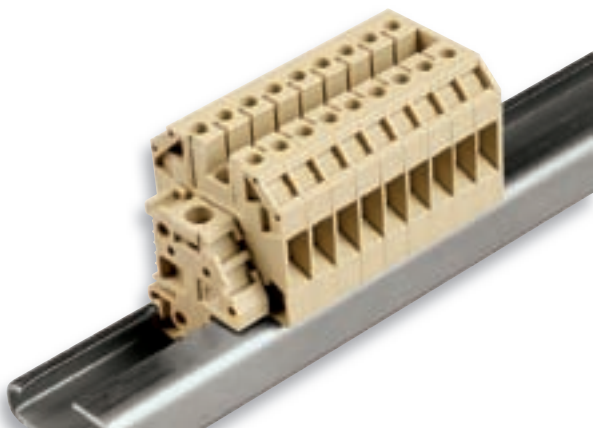
- Wemid insulating material.
- UL 94 V0 flammability rating.
- Uniform accessories for different cross sections.
- 100% vibration proof.
- Patented clamping yoke system.
- ATEX approved.

CE



ORDER CODE	MODEL NO.	PACK CONTENTS					PRICE - EA	
		CONDUCTOR SIZE (mm <sup>2</sup> )	TERMINALS	EARTH TERMINALS	END STOP	END PLATE	1 off	5 off
1050151150	NLTERM2.5/35	2.5	10	-	2	1	£11.43	£10.39
1050151151	NLTERM4.0/35	4	10	-	2	1	£13.34	£12.13
1050150467	NLTERMPK2.5/35	2.5	8	2	2	1	£18.37	£16.70
1050150469	NLTERMEARTH4/35	4	-	10	-	-	£42.58	£38.71

## TERMINAL PACKS - 32mm G RAIL



- Thermoplastic insulating material.
- UL 94 V2 flammability rating.
- Comprehensive range of accessories.
- Multi national approvals.
- ATEX approved.

CE



ORDER CODE	MODEL NO.	PACK CONTENTS					PRICE - EA	
		CONDUCTOR SIZE (mm <sup>2</sup> )	TERMINALS	EARTH TERMINALS	END STOP	END PLATE	1 off	5 off
1050151148	NLTERM2.5/32	2.5	10	2	-	1	£13.74	£12.49
1050151149	NLTERM4.0/32	4	10	2	-	1	£15.36	£13.96
1050150466	NLTERMPK2.5/32	2.5	8	2	2	1	£21.90	£19.91
1050150468	NLTERMEARTH4/32	4	-	-	10	-	£43.80	£39.82

All prices subject to VAT at 17.5%.

# TERMINALS - RAIL MOUNTED

## TERMINAL RAIL - TOP HAT



NLRAIL15S

NLRAIL35

NLRAIL35U

NLRAIL35S

NLRAIL3515U

NLRAIL3515S

- Profile A - manufactured and approved to DIN 46277-2/EN 50045.
- Profile B and C - manufactured and approved to DIN 46277-3/EN 50022.

Profile A - 15 x 5mm



Profile C - 35 x 15mm



Profile B - 35 x 7.5mm



ORDER CODE	MODEL NO.	PROFILE	LENGTH (M)	SLOTTED	PRICE - EA	
					1 off	5 off
1050152842	NLRAIL15S	A	2	✓	£10.01	£9.10
1000009370	NLRAIL35	B	0.5	✗	£2.65	£2.41
1050152843	NLRAIL35U	B	2	✗	£5.93	£5.39
1050152844	NLRAIL35S	B	2	✓	£6.06	£5.51
1050152845	NLRAIL3515U	C	2	✗	£11.75	£10.68
1050152846	NLRAIL3515S	C	2	✓	£10.51	£9.55



## TERMINAL RAIL - 32mm G

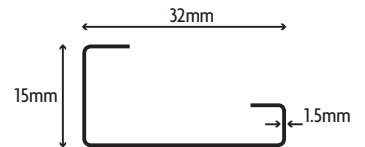


NLRAIL32

NLRAIL32U

NLRAIL32S

- Manufactured and approved to DIN 46277-1/EN 50035.



ORDER CODE	MODEL NO.	LENGTH (M)	SLOTTED	PRICE - EA	
				1 off	5 off
1000009369	NLRAIL32	0.5	✗	£2.86	£2.60
1050152840	NLRAIL32U	2	✗	£5.62	£5.11
1050152841	NLRAIL32S	2	✓	£6.06	£5.51



## TERMINAL RAIL SUPPORT



- Fixing hole size M6.
- 35° mounting angle.
- Pack of 5.

ORDER CODE	MODEL NO.	PRICE - PK	
		1 off	5 off
1050152847	NLRAILASB	£2.02	£1.84



All prices subject to VAT at 17.5%.

## PANEL TRANSFORMERS



- Specifically designed to comply fully with BS 3535:1990 (EN 60742).
- Covered terminal blocks.
- Centre tap available as standard.
- Offered with either 230/240V or 400/415/440V primary tapings suitable for both British and European mains supply voltages.
- Two secondary voltage options are offered, both of which are provided with a centre tap.
- 24V output models are available in output power ratings of 50VA to 500VA.
- 110V output models are available in output power ratings of 50VA to 1500VA.
- A thermal fuse is incorporated into the primary winding providing the necessary protection against temperature rise and nuisance tripping.

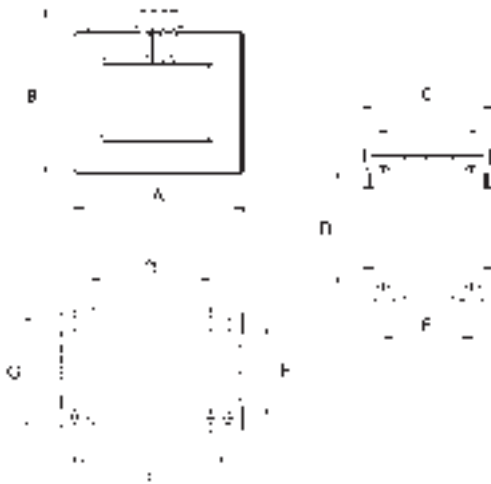


N.B. Steel enclosures for Newlec panel transformers are available on request.

For Portable Tool Transformers see page 102



ORDER CODE	MODEL NO.	VOLTAGE	RATING (VA)	PRICE - EA
				1 off
1000008603	NL970BS	230/24	50	£25.99
1000008604	NL971BS	400/24	50	£25.99
1000008605	NL972BS	230/24	100	£34.56
1000008606	NL973BS	400/24	100	£34.56
1000008607	NL974BS	230/24	150	£40.73
1000008608	NL975BS	400/24	150	£40.73
1000008609	NL976BS	230/24	250	£52.56
1000008610	NL977BS	400/24	250	£52.56
1000008611	NL978BS	230/24	500	£77.72
1000008612	NL979BS	400/24	500	£77.72
1000008613	NL980BS	400/110	50	£25.99
1000008614	NL981BS	230/110	50	£25.99
1000008615	NL982BS	400/110	100	£34.56
1000008616	NL983BS	230/110	100	£34.56
1000008617	NL984BS	400/110	150	£40.73
1000008618	NL985BS	230/110	150	£40.73
1000008619	NL986BS	400/110	250	£52.56
1000008620	NL987BS	230/110	250	£52.56
1000008621	NL988BS	400/110	500	£77.72
1000008622	NL989BS	230/110	500	£77.72
1000008623	NL990BS	400/110	750	£104.44
1000008624	NL991BS	230/110	750	£104.44
1000008625	NL992BS	400/110	1000	£128.69
1000008626	NL993BS	230/110	1000	£128.69
1000008627	NL994BS	400/110	1500	£155.16
1000008628	NL995BS	230/110	1500	£155.16



Use VA rating to reference dimensions (mm)/weight (kg).

VA	DIMENSIONS (mm)							FIXING SLOT	WEIGHT (kg)
	A	B	C	D	E	F	G		
50	80	92	76	54	39	N/A	52	8 x 4	1.1
100	98	108	82	64	46	80	60	8 x 5	2.1
150	98	108	95	64	59	80	73	8 x 5	2.8
250	118	125	112	64	60	95	76	10 x 5	4.0
500	137	140	130	89	84	115	102	10 x 5	7.4
750	168	165	125	89	78	119	92	12 x 7	10.2
1000	168	165	145	89	97	119	112	12 x 7	12.6
1500	216	230	140	115	95	160	113	18 x 10	17.4

All prices subject to VAT at 17.5%.

# CONTROL SWITCHES & SWITCH DISCONNECTS

## CHANGEOVER SWITCHES - INSULATED ENCLOSED



NLSWC0634



NLSWC0252



NLSWC0632



- Insulated enclosure.
- Single phase or three phase applications.
- Earth terminal included.
- Captive +/- terminal screws.
- Padlockable in 'OFF' position (up to 3 padlocks).
- With knockouts.
- Lid interlock with switch in 'ON' position.
- IP66 and IP67 rating on all enclosures.
- Manufactured to IEC 60947-3.

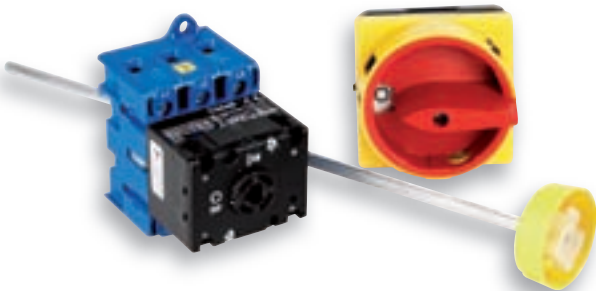
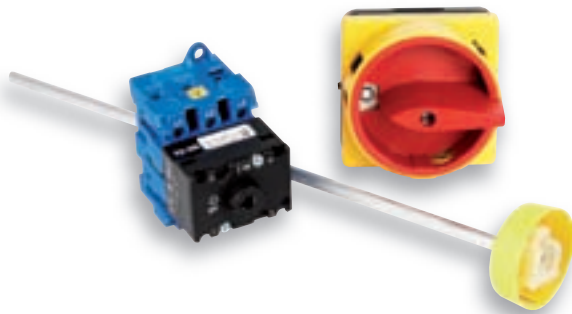


ORDER CODE	MODEL NO.	CURRENT RATING (Amps)	NO. OF POLES	SIZE (mm) H x W x D	PRICE - EA
					1 off
1050362947	NLSWC0252	25	2	121 x 86 x 80	£37.83
1050362948	NLSWC0632	63	2	189 x 98 x 91	£98.14
1050362949	NLSWC1002	100	2	248 x 149 x 110	£170.31
1050362950	NLSWC0254	25	4	248 x 149 x 110	£73.07
1050362951	NLSWC0634	63	4	280 x 190 x 130	£202.91

\* = IP54

Other configurations of switch are available on request.

## SWITCH DISCONNECTS - PANEL MOUNT



- Red/yellow integral padlockable handle.
- IP66 handle.
- Door interlocked.
- Complete with 300mm adjustable extension shaft.
- Screw or DIN rail mount.
- 2 early break auxiliary contacts.
- Finger proof terminals.



ORDER CODE	MODEL NO.	CURRENT RATING	AC23 (kW)	PRICE - EA
				1 off
1050152796	NLSWP203	3 Pole 20A	5.5	£27.77
1050152797	NLSWP323	3 Pole 32A	11	£31.02
1050152798	NLSWP633	3 Pole 63A	22	£40.76

Other configurations of switch are available on request.

All prices subject to VAT at 17.5%.

## SWITCH DISCONNECTS - STAINLESS STEEL ENCLOSED



- Grade 316L, bright, stainless steel finish.
- Earth terminal and lid bonding link.
- Red/yellow padlockable handle.
- Captive +/- terminal screws.
- IP65 rating.
- Manufactured to IEC 60947-3.

CE



ORDER CODE	MODEL NO.	CURRENT RATING	AC23 (kW)	SIZE (mm) H x W x D	PRICE - EA
					1 off
1050152775	NLSW204SS	4 Pole 20A	5.5	164 x 94 x 81.5	£121.57

Other configurations of switch are available on request.

## SWITCH DISCONNECTS - STEEL ENCLOSED



NLSW204M



NLSW634M

- Red/yellow integral padlockable handle.
- Grey powder paint finish RAL 7032.
- Captive +/- terminal screws.
- Earth terminal and lid bonding link.
- IP65 rating.
- Manufactured to IEC 60947-3.

CE



ORDER CODE	MODEL NO.	CURRENT RATING	AC23 (kW)	SIZE (mm) H x W x D	PRICE - EA
					1 off
1050152776	NLSW204M	4 Pole 20A	5.5	164 x 94 x 80	£74.70
1050152777	NLSW324M	4 Pole 32A	11	164 x 94 x 80	£91.23
1050152778	NLSW634M	4 Pole 63A	22	194 x 119 x 115	£115.23

Other configurations of switch are available on request.

## SWITCH DISCONNECTS - INSULATED ENCLOSED



NLSW804P  
NLSW1004P



NLSW634P



NLSW204P  
NLSW324P  
NLSWM203  
NLSWM323

- 3 Pole comes with early break auxiliary.
- Suitable for motor isolator.

CE



ORDER CODE	MODEL NO.	CURRENT RATING	AC23 (kW)	SIZE (mm) H x W x D	PRICE - EA
					1 off
1050362952	NLSWM203	3 Pole 20A	5.5	120 x 85 x 90	£19.56
1050362953	NLSWM323	3 Pole 32A	11	120 x 85 x 90	£26.31

Other configurations of switch are available on request.

- Red/yellow integral padlockable handle.
- Switch interlocked with lid to prevent opening in 'ON' position.
- Captive +/- terminal screws.
- Earth terminal included.
- With combi knockouts.
- IP66/67 rating on all enclosures.
- Manufactured to IEC 60947-3.

CE



ORDER CODE	MODEL NO.	CURRENT RATING	AC23 (kW)	SIZE (mm) H x W x D	PRICE - EA
					1 off
1050152770	NLSW204P	4 Pole 20A	5.5	120 x 85 x 90	£20.12
1050152771	NLSW324P	4 Pole 32A	11	120 x 85 x 90	£26.76
1050152772	NLSW634P	4 Pole 63A	22	190 x 100 x 93	£51.04
1050152773	NLSW804P	4 Pole 80A	30	250 x 145 x 107	£92.17
1050152774	NLSW1004P	4 Pole 100A	37	250 x 145 x 107	£103.64
1050152779	NLSW206P	6 Pole 20A	5.5	120 x 85 x 90	£56.55
1050152780	NLSW326P	6 Pole 32A	11	190 x 100 x 93	£65.43
1050152781	NLSW636P	6 Pole 63A	22	250 x 145 x 107	£93.31

All prices subject to VAT at 17.5%.

## PLUG IN RELAYS - INDUSTRIAL



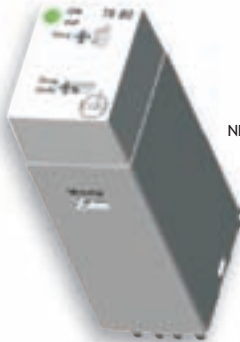
NLCR2B



NLCR3A



NLCR4LD



NLCR4LT

- Industrial standard octal plug in relays.
- Push to test, latch and mechanical flag indicator.
- Manufactured to IEC 61810-1.
- Cadmium-free contacts.
- All recognised European and North American approvals.



ORDER CODE	MODEL NO.	NO. OF PINS	NO. OF POLES	CONTACT RATING (Amps)	VOLTAGE	PRICE - EA 1 off
1050363023	NLCR2D	8	2	10	12V DC	£8.36
1050152806	NLCR2E	8	2	10	24V DC	£8.36
1050152807	NLCR2A	8	2	10	24V AC	£8.36
1050152808	NLCR2B	8	2	10	110V AC	£8.36
1050152809	NLCR2C	8	2	10	230V AC	£8.36
1050363024	NLCR3D	11	3	10	12V DC	£9.21
1050152810	NLCR3E	11	3	10	24V DC	£9.21
1050152811	NLCR3A	11	3	10	24V AC	£9.21
1050152812	NLCR3B	11	3	10	110V AC	£9.21
1050152813	NLCR3C	11	3	10	230V AC	£9.21

- 14 pin relays are push to test, latch, mechanical flag and LED indication.
- Cadmium-free contacts.
- Height 29mm.
- All recognised European and North American approvals.



ORDER CODE	MODEL NO.	NO. OF PINS	NO. OF POLES	CONTACT RATING (Amps)	VOLTAGE	PRICE - EA 1 off
1050363025	NLCR4LD	14	4	6	12V AC	£7.59
1050152818	NLCR4LE	14	4	6	24V DC	£7.51
1050152819	NLCR4LA	14	4	6	24V AC	£7.51
1050363026	NLCR4LF	14	4	6	48V AC	£7.68
1050152820	NLCR4LB	14	4	6	110V AC	£7.77
1050152821	NLCR4LC	14	4	6	230V AC	£7.96

- Plug in multifunction timer for 14 pin relay base.
- Supply voltage 24 ... 230V AC-DC +/- 10%.
- Full scale time settings: 1s + 5s + 30s + 1m + 5m + 10m + 30m + 1h + 10h.
- Function settings:
  - A: ON Delay
  - C: Off Delay
  - CI: Flicker (OFF start)
  - Ca: Flicker (ON start)
  - N: One Shot (0.7) On delay repeat cycle
  - Nc: One Shot (0.7) On delay single cycle
  - L: ON-off percentage time single cycle
  - M: ON-off percentage time repeat cycle
  - ON: ON during the power supply
  - OFF: OFF during the power supply



ORDER CODE	MODEL NO.	DESCRIPTION	PRICE - EA 1 off
1050363027	NLCR4LT	Multifunction Timer	£48.85

- Easy insertion of module into socket.
- Wiring in parallel to the coil.

ORDER CODE	MODEL NO.	DESCRIPTION	PRICE - EA 1 off
1050363028	NLCR4D1	Suppressor Module Diode (All DC Voltage) for 14 Pin Relays	£1.52
1050363029	NLCR4RC1	Suppressor Module RC Network (6-60V AC) for 14 Pin Relays	£3.62
1050363030	NLCR4RC2	Suppressor Module RC Network (110-230V AC) for 14 Pin Relays	£3.62



NLCRB11



NLCRB8



NLCRB14

- Surface or DIN rail mount.
- Manufactured to IEC 61810-1.



ORDER CODE	MODEL NO.	NO. OF PINS	PRICE - EA 1 off
1050152828	NLCRB8	8	£3.51
1050152829	NLCRB11	11	£4.67
1050152830	NLCRB14	14	£4.80

All prices subject to VAT at 17.5%.

## MULTI FUNCTION TIMER



- DIN rail mounting.
- Multi voltage 24V AC/DC, 130V AC.
- 5 Amp rated contacts.
- Delay on, delay off.
- Two symmetrical cycling functions.
- Time settings 0.3 seconds - 64 minutes.
- 175mm wide.
- Manufactured to EN 61812-1 and EN 61010-1.

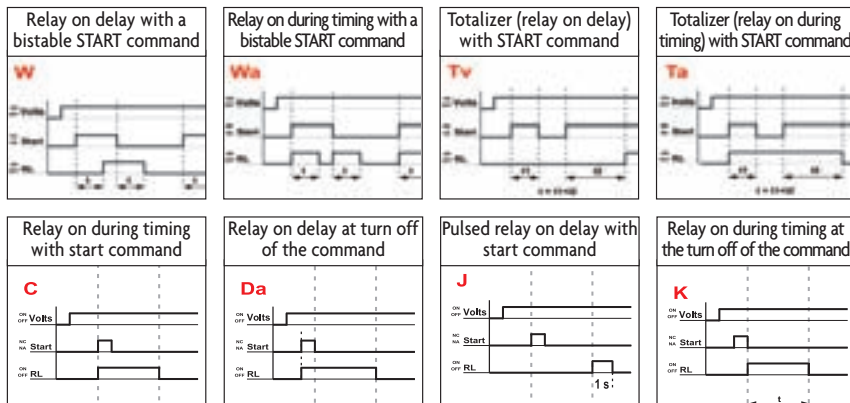


CE

1 Year

ORDER CODE	MODEL NO.	DESCRIPTION	PRICE - EA
			1 off
1050152833	NLCMFT	Timer, Multi Time Range, Multi Voltage	£52.78

### Functions



## MULTI FUNCTION TIMER



- DIN rail mounting.
- Supply voltage: 24...48V DC + 24...230V AC 50/60Hz.
- 8 Amp rated contacts.
- Full scale time ranges: 1s + 5s + 10s + 30s + 1min + 5min + 10min + 30min + 1h + 10h.
- LED indication of elapsed time.
- Output relay x 2.
- LED indicator for power on, relay 1 and 2 status.

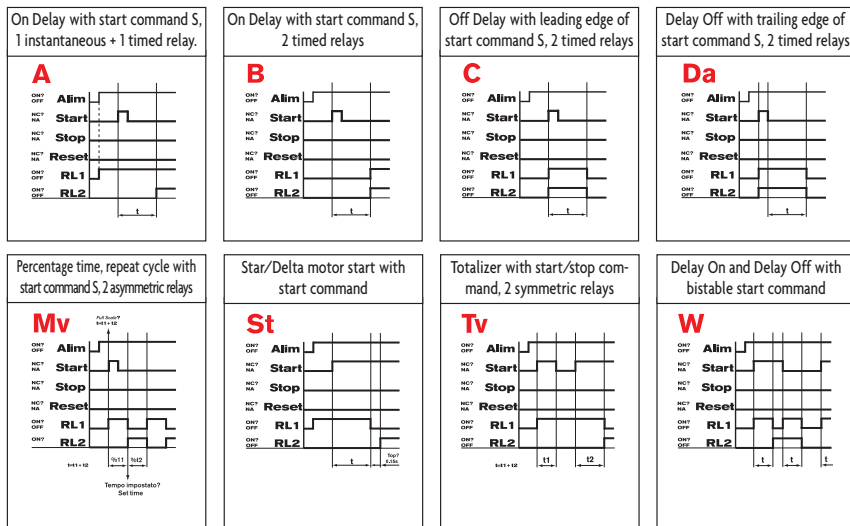


CE

1 Year

ORDER CODE	MODEL NO.	DESCRIPTION	PRICE - EA
			1 off
1050363031	NLCMFT2	Timer, Multi Time Range, Multi Voltage inc. Star/Delta	£68.51

### Functions



All prices subject to VAT at 17.5%.

# CABLE MANAGEMENT

## PANEL TRUNKING



- Open slot panel trunking manufactured from rigid, anti-shock plastic.
- 2M lengths. ● Complete with lid. ● Grey RAL 7030.
- Fingers easily removed to accommodate larger cable sizes.
- Base holes slotted to DIN 43659, CEI23-22.
- Flame and combustion resistant to DIN 4102 and ASTM D 635.

ORDER CODE	MODEL NO.	DIMENSIONS W x H (mm)	PRICE - EA
			1 off
1050152848	NLCPT1	25 x 40	£4.43
1050152849	NLCPT2	25 x 60	£5.95
1050152850	NLCPT3	25 x 80	£7.70
1050152851	NLCPT4	40 x 40	£5.46
1050152852	NLCPT5	40 x 60	£7.43
1050152853	NLCPT6	40 x 80	£8.85
1050152854	NLCPT7	50 x 50	£6.66

ORDER CODE	MODEL NO.	DIMENSIONS W x H (mm)	PRICE - EA
			1 off
1050152855	NLCPT8	60 x 60	£8.63
1050152856	NLCPT9	60 x 80	£10.65
1050152857	NLCPT10	80 x 80	£13.11
1050152858	NLCPT11	80 x 100	£25.30
1050152859	NLCPT12	100 x 80	£17.92
1050152860	NLCPT13	100 x 100	£29.02



## SPIRAL BINDING



- Ideal for tidying and grouping cables.
- Re-usable.
- Polythene.
- -60° to +90°C working temperature.
- Available in 5M lengths.

ORDER CODE	MODEL NO.	MIN/MAX BUNDLE DIAMETER (mm)	COLOUR	PRICE - LTH
				1 off
1050362968	NLCSB1NE	4.8 - 51	Neutral	£3.83
1050362969	NLCSB1BL	4.8 - 52	Black	£3.83
1050362970	NLCSB2NE	10.0 - 100	Neutral	£5.90
1050362971	NLCSB2BL	10.0 - 100	Black	£5.90



## BRAIDED SLEEVING



- Robust sleeving to protect cables from abrasion.
  - Polyester.
  - Working temperature -50°C to +150°C.
  - Melting point 256°C.
  - Conforms to UL94 flammability class V2.
  - Halogen free.
  - Packed in 5M lengths.
- N.B. Cut ends to be fused.

ORDER CODE	MODEL NO.	COLOUR	DIAMETER MIN (mm)	DIAMETER MAX (mm)	PRICE - EA
					1 off
1050362958	NLCBS5G	Grey	3	9	£5.24
1050362959	NLCBS5B	Black	3	9	£5.24
1050362960	NLCBS10G	Grey	7	15	£7.75
1050362961	NLCBS10B	Black	7	15	£7.75
1050362962	NLCBS15G	Grey	10	21	£8.60
1050362963	NLCBS15B	Black	10	21	£8.60
1050362964	NLCBS20G	Grey	14	25	£10.05
1050362965	NLCBS20B	Black	14	25	£10.05
1050362966	NLCBS40G	Grey	30	55	£18.59
1050362967	NLCBS40B	Black	30	55	£18.59



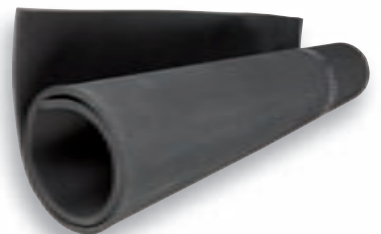
## CABLE WRAP



- Allows easy access to the cable at any point.
- Quick, easy installation.
- Can be used to wrap and cover wires, cables and hoses.
- Flame retardant PA6 material.
- Working temperature -40° to +90°C.
- UL94V0.
- 2M lengths.

ORDER CODE	MODEL NO.	SIZE (mm)	COLOUR	PRICE - EA
				1 off
1050362954	NLSCC1G	20	Grey	£6.56
1050362955	NLSCC1B	20	Black	£6.56
1050362956	NLSCC2G	25	Grey	£7.76
1050362957	NLSCC2B	25	Black	£7.76

## ELECTRICAL SWITCHBOARD MATTING



- Conforming to BS921, working voltage 650V.
- Tested to 15,000 volts.
- Width: 915mm.
- Thickness: 9mm.
- Three lengths available.

ORDER CODE	MODEL NO.	LENGTH (M)	PRICE - EA
			1 off
1050152170	NLESM3	3	£166.19
1050152171	NLESM4.5	4.5	£237.38
1050152172	NLESM11.5	11.5	£551.37

All prices subject to VAT at 15%.