

Amphenol® Industrial Connectors for Severe Environments

SL-395-1

**STAR-LINE®,
STAR-LINE EX®,
STAR-LOK®
Heavy Duty Power
Connectors**

**CTOS®, CTOL®
Field Deployable
Lens Connectors
for Fiber Optic
High Speed
Transmission**

**AFC SERIES
EExd Approved
Connectors**



Amphenol

www.amphenol-industrial.com

Heavy Duty Connectors - Star-Line®, Star-Line EX®, Star-Lok®

Pyle Star-Line®

Reference Catalog 12-054



APPLICATION	STANDARDS/REQUIREMENTS	COUPLING/MOUNTING	CONTACT TERMINATION	PERFORMANCE ENVIRON./ELECT.
Heavy duty, environmental cylindricals for high amperage and high density control and instrumentation applications. Rugged, double lead threaded. <u>ZP/ZR designations.</u>	Equals or exceeds MIL-C-5015 E and R specifications. UL listed and CSA listed for circuit breaking capability.	Double lead Acme threads provide complete coupling in one turn of the coupling nut, and do not clog under adverse weather conditions. Large wiring space provided in cable housings and conduit fitting bodies.	Solder, crimp and pressure terminals. Circuit breaking power and control types.	Operating temp. from -67°F to +257°F. IP67 rating for environmental sealing. Hard anodic coating provides dielectric strength with heat and corrosion resistance. Up to high amperage of 1135 amps at 1000VAC or DC rating available.

OPTIONAL FEATURES

- 5 shell styles with over 150 insert patterns.
- 3 retention styles with captive contacts or insertable/removable contacts.
- Contact inserts and adapters are interchangeable and reversible to suit special needs.
- Thermocouple contacts available.
- Variety of backend accessories including basketweave cable grips, straight or angled adapters, and receptacle mounted to junction boxes.

MARKETS

- Mass Transportation
- Automotive Tooling
- Co Generation Equip.
- Oil Exploration & Production Equip.
- Motor Operated Valves

Pyle Star-Line EX®

Reference Catalog 12-054



APPLICATION	STANDARDS/REQUIREMENTS	COUPLING/MOUNTING	CONTACT TERMINATION	PERFORMANCE ENVIRON./ELECT.
Heavy duty, environmental cylindricals for high power applications with harsh/potentially explosive environments. Rugged, double lead threaded. <u>EX designations.</u>	Hybrid form of the Star-Line series with higher temperature ranges. Cenelec Certified for use in Zone 1-IIC hazardous environment.	Double lead Acme threads provide complete coupling in one turn of the coupling nut, and do not clog under adverse weather conditions. Large wiring space provided in cable housings and conduit fitting bodies.	Solder, crimp and pressure terminals. Circuit breaking power and control types.	Operating temp. from -65°C to +257°C. IP67 rating for environmental sealing. Hard anodic coating provides dielectric strength with heat and corrosion resistance. Up to high amperage of 1135 amps at 1000VAC or DC rating available.



EX Certificate
#03ATEX 1101X

OPTIONAL FEATURES

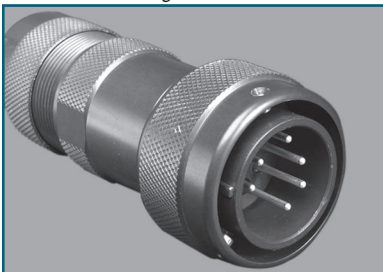
- 5 shell styles with same insert patterns of Star-Line series.
- Variety of backend accessories including basketweave cable grips, straight or angled adapters, and receptacles mounted to junction boxes.
- Can be terminated onto unarmored or armored and sheathed cables built to several popular standards.

MARKETS

- Mass Transportation
- Petro-chemical
- Off-shore oil drilling
- Automotive paint booths
- Aircraft Refueling Pits
- Pharmaceutical Mfg. Equip.

Pyle Star-Lok®

Reference Catalog 12-054



APPLICATION	STANDARDS/REQUIREMENTS	COUPLING/MOUNTING	CONTACT TERMINATION	PERFORMANCE ENVIRON./ELECT.
Heavy duty, environmental cylindricals for similar applications as Star-Line series, but with reverse bayonet coupling. <u>SP/SR designations.</u>	High power and rugged features of the Star-Line series, but with reverse bayonet coupling shells.	Spring-loaded reverse bayonet coupling - simple push to mate, and a simple eighth turn and pull to unmate.	Solder, crimp and pressure terminals. Circuit breaking power and control types.	Operating temp. from -65°C to +257°C. IP67 rating for environmental sealing. Hard anodic coating provides dielectric strength with heat and corrosion resistance. Up to high amperage of 1135 amps at 1000VAC or DC rating available.

OPTIONAL FEATURES

- Same choices of inserts, contacts, tooling and hardware accessories as Star-Line series.

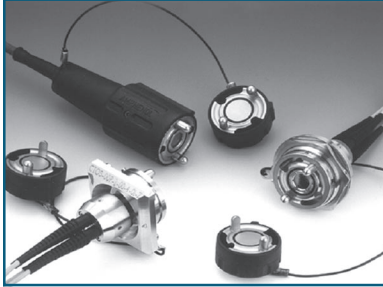
MARKETS

- Mass Transportation
- Automotive Tooling
- Co Generation Equip.
- Oil Exploration Equip.
- Chemical Production Equip.
- Motor Operated Valves

Other Industrial Connectors for Severe Environments

CTOS, CTOL Field Deployable Lens Connectors

Consult Amphenol Socapex or Amphenol Aerospace for further information.



APPLICATION	STANDARDS/ REQUIREMENTS	COUPLING/ MOUNTING	CONTACT TERMINATION	PERFORMANCE ENVIRON./ELECT.
Fiber optic high speed transmission Tactical Multiway interconnects for harsh environments like battlefield conditions and quick deployable large capacity links. CTOS 38 mm dia. CTOL 52 mm. dia.	Produced with expanded beam fiber optic technology. Qualified to Stanag 4290.	Hermaphroditic connector. Entire family is equipped with the same hermaphroditic interface in order to extend the optical links by adding identical cable sections.	CTOS 2 and 4 channel configurations offered with single mode and multi-mode termini. CTOL 2, 4 and 8 channel configurations offered with multi-mode termini.	Operating temp. from -40° C to +85° C. Durability: 5000 mating/unmating cycles for CTOS and CTOL. Provides EMI protection. Stainless steel bodies resist corrosion. Ergonomic and ribbed synthetic rubber shells improve handling and ensure mechanical protection. Connector interface can be easily cleaned and will perform in harsh environmental conditions. Insertion losses below 2.0 dB.

OPTIONAL FEATURES

- Plugs and receptacles offered in straight and 90 degree styles.
- Tactical harnesses and protection caps available.
- Complete reels and termination kits available.
- AXOS deployable lens connectors are also available. These are 27 mm dia. with 2 and 4 channel configurations.

MARKETS

- Communications
- Radar Systems
- Robotics
- Military Vehicles
- Mining & Offshore

AFC Series Connectors

Consult Amphenol Limited or Amphenol Industrial Operations for further information.



APPLICATION	STANDARDS/ REQUIREMENTS	COUPLING/ MOUNTING	CONTACT TERMINATION	PERFORMANCE ENVIRON./ELECT.
Cylindrical explosion proof connector series. Utilizes standard EExd flameproof glands for easy and cost effective cable termination.	Approved to specification EExd IIB T6. Designed and constructed to: BS5501 part 1; EN5014 GP II & BS5501 part 5; NS50.	Heavy duty threaded shells. Free and fixed styles with EExd flameproof glands.	Solder contact termination.	Operating temp. from -40°C to +120°C. IP67 rated for environmental sealing. Rated up to 140 amps. Maximum pressure 20 BAR. Exemption test to 80 BAR. 5A and 10A current rating (application specific to 140A. 1200V dc 850V ac / 700C dc 495V ac (application specific to 10 KV).



OPTIONAL FEATURES

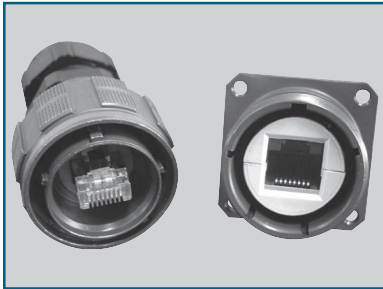
- Available in aluminum, stainless steel or nickel aluminum bronze.
- Option to have pin or sockets in either half of the connector.
- Available patterns are from 1 to 128 contacts.

MARKETS

- Data Acquisition and Transmission in Harsh Environments
- Robotics, Process & Motion Control
- Oil & Seismic Industry
- Battlefield Communication

RJ Field Connectors

Consult Amphenol Socapex, Amphenol Air LB, or Amphenol Aerospace for further information.



APPLICATION	STANDARDS/ REQUIREMENTS	COUPLING/ MOUNTING	CONTACT TERMINATION	PERFORMANCE ENVIRON./ELECT.
Cylindrical interconnect with Ethernet connection. Designed for use where it is necessary to go beyond the protected office environment of most Ethernet applications, to the harsher environments of industrial and even mil-aero applications.	Allows use of Ethernet Class D/Cat. 5e connection for 10 BaseT, 100 BaseTX, or 1000 Base T networks.	RJF TV within MIL-DTL-38999 connector shell is threaded coupling. RJF within MIL-C-26482 shell is bayonet coupling. RJF 544 within plastic shell is push-pull coupling.	Uses pre-existing Ethernet Class D/ Cat. 5e cable, no additional terminations required.	Operating temp. from -40°C to +85°C. IP67 rated for environmental sealing. Resistant to shock, vibration and traction. Eliminates hazardous cabling operation in the field and requires no special tooling. Offers reinforced EMI protection in the three series: RJF, RJF TV, RJF 544.

OPTIONAL FEATURES

- Available in threaded (RJF TV) or bayonet (RJF) or push-pull (RJF 544) shell styles.
- Allows for an existing standard RJ45 cordset to be plugged into the RJ Field connector shell to enhance performance.
- Mechanical coding and 4 position polarization is per customer requirements.

MARKETS

- Data Acquisition and Transmission in Harsh Environments
- Robotics, Process & Motion Control
- Oil & Seismic Industry
- Battlefield Communication

Amphenol Corporation
Amphenol Industrial Operations
40-60 Delaware Avenue
Sidney, NY 13838-1395
Phone: 607-563-5011
1-800-678-0141
Fax: 607-563-5157
Web: www.amphenol-industrial.com

SALES OFFICES

Amphenol Corporation
Amphenol Aerospace
23276 South Pointe Drive
Suite 113
Laguna Hills, CA 92653
Phone: 949-855-4454
1-800-678-0141
Fax: 949-855-9115

Amphenol Corporation
Amphenol Aerospace
7506 East Independence Blvd.
Charlotte, NC 28227
Phone: 704-531-9053
1-800-678-0141
Fax: 704-531-9054

Amphenol Corporation
Amphenol Aerospace
2010 Corporate Ridge
McLean, VA 22101
Phone: 1-800-678-0141

Amphenol Industrial Operations
Amphenol Power Solutions
34190 Riviera Drive
Fraser, MI 48026
Phone: 586-294-7400
Fax: 586-294-7402
www.radsok.com

For information on International Products, a North American office can be contacted:
Phone: 978-532-8800
Fax: 978-532-6800

Amphenol PCD
2 Technology Drive
Peabody, MA 01960
Phone: 978-532-8800
Fax: 978-532-6800
Email: pcddsales@pcdinc.com

Amphenol Canada
20 Melford Drive
Scarborough, ON M1B 2X6
Canada
Phone: 416-291-4401
Fax: 416-292-0647

AUTHORIZED INDUSTRIAL DISTRIBUTORS FOR STAR-LINE / STAR-LOK PRODUCT

Argo International
New Orleans, LA
Phone: 504-733-4500
Fax: 504-734-5836
Web: www.argointl.com

Dutrol International
Brampton, ONT
Phone: 905-792-2875
Fax: 905-792-2038
E-mail: dutrol_bram@cuss.com

Gaffney-Kroese Electric
Rahway, NJ
Phone: 732-850-4418
Fax: 732-381-0465
E-mail: gksales@gaffney-kroese.com

Geophysical Electrical Supply Co. (GESCO)
Houston, TX
Phone: 713-645-5999
Fax: 713-645-4999
E-mail: gesco@evi.net

Hillcrest Enterprises
Ashland, VA
Phone: 800-848-3106 / 804-798-8390
Fax: 804-752-7830
E-mail: cordgrip@aol.com
Web: www.plugs.cc

Norton Electric Wholesale
Los Angeles, CA
Phone: 323-222-7181
Fax: 323-221-6429
E-mail: nortonelectric.com
Web: www.nortonelectric.com

Offshore Marine
Houston, TX
Phone: 800-506-9473
Fax: 713-674-0033
E-mail: pdavis@offmarcab.com
Web: www.offmarcab.com

Steck Connections
Mississauga, ONT
Phone: 905-608-2444
Fax: 905-608-2895
E-mail: steck@ican.net
Web: www.steckconnections.com

Steiner
Elk Grove Village, IL
Phone: 847-228-0400
Fax: 847-228-1352
E-mail: infor@stnr.com
Web: www.steinerelectric.com

Technor ASA
Stavanger, Norway
Phone: 47 51 84 4100
Fax: 47 51 84 4103
Web: www.technor.nl

Wholesale Electric
Houston, TX
Phone: 800-486-8563
Fax: 713-749-8415
E-mail: wholesale.com
Web: www.wholesaleelectric.com

INDUSTRIAL APPLICATIONS REPRESENTATIVE
J.A. Davenport Co.
Houston, TX
Phone: 281-870-9890
Fax: 281-870-9074
E-mail: JADav713@aol.com

INTERNATIONAL Latin America
ARGENTINA
Amphenol Argentina
Avenida Callao 930
2nd floor Office B Plaza
C1023AAP Buenos Aires, Argentina
Phone: (54 11) 48 15 68 86
Fax: (54 11) 48 14 57 79
E-mail: vendas@amphenol.com.ar

BRAZIL
Amphenol do Brasil Ltda.
Rua Diogo Moreira 132
CEP 05423-010
Sao Paulo - SP, Brazil
Phone: (55-11) 3815.1003
Fax: (55-11) 3815.1629
E-mail: vendas@amphenol.com.br

MEXICO
Amphenol Mexico
Prolongacion Reforma 61-6 B2
Col. Paseo de las Lomas
C.P. 01330 Mexico D.F., Mexico
Phone: (52-55) 5258.9984
Fax: (52-55) 5081.6890
E-mail: info@amphenolmexico.com

Europe
AUSTRIA & EASTERN EUROPE
Amphenol Gesellschaft mbH
P.O. Box 63, 3990 DB Houton
The Netherlands
Phone: 31 30 6358000
Fax: 31 30 6377899
E-mail: info@amphenol-nl.com

ENGLAND
Amphenol Limited
Thanet Way, Whitstable
Kent CT5 3JF, United Kingdom
Phone: (44-1-227) 773200
Fax: (44-1-227) 276571
Email: info@amphenol.co.uk

FRANCE
Amphenol-Air LB
29, Voie d'Y Vois
F-00810 Blagny, Frnace
Phone: 33-3 2422-7849
Fax: 33-3 2422-7850

FRANCE
Amphenol Socapex
948 Promenade de l'Arve, BP29
Thyez 74311
Cedex, France
Phone: (33-4) 50892800
Fax: (33-4) 5096-1941
ASF CBV TX

GERMANY
Amphenol-Air LB, GmbH
Am Kleinbahnhof
D-66740 Saarlouis, Germany
Phone: (49-6831) 9810-87
Fax: (49-6831) 9810-30

GERMANY
Amphenol-Tuchel Elect. GmbH
August-Haeusser Strasse 10
Postfach 1110
74001 Heilbronn, Germany
Phone: (49-7131) 929 0
Fax: (49-7131) 929 414

ITALY
Amphenol Italia S.p.A.
Via Barbaiana 5
20020 Lainate (Milano), Italy
Phone: 39-02-932541
Fax: 39-02-93254444
E-mail: info@amphenol-it.com

BENELUX
Amphenol European Sales Operations
Amphenol Benelux BV
P. O. Box 63, 3990 DB Houten
The Netherlands
Phone: 31-30-6358000
Fax: 31-30-6377034
E-mail: info@amphenol-nl.com

SPAIN & PORTUGAL
Amphenol Iberica
Edificio "Burgosol" - Oficina No. 55
c/Comunidad de Madrid, 35-bis,
28230 Las Rozas,
Madrid, Spain
Phone: 34-91-6407303
Fax: 34-91-6407307
E-mail: info@amphenol-it.com

SWITZERLAND
Amphenol Switzerland
P.O. Box 63, 3990 DB Houton,
The Netherlands
Phone: 31 30 6358000
Fax: 31 30 6377899
E-mail: info@amphenol-nl.com

Middle East / Africa
ISRAEL
Bar-Tec Ltd.
3 Hagavish St., P.O.B. 279
Kfir-Barkana Bldg., East Industrial Zone
Kfar Sava 44102, Israel
Phone: (972-9) 764.4100
Fax: (972-9) 7674324
E-mail: www.bar-tec.com

SOUTH AFRICA
Amphenol South Africa
30 Impala Road
Sandton, 2146 - Chislehurst
South Africa
Tel: (27-11) 783-9517
Fax: (27-11) 783-9519
E-mail: amphenol_africa@csi.com

TURKEY
Amphenol Turkiye
Ayazaga Mah. Meydan Sk. No. 28
Beybi Giz Plaza, Kat. 26
34396 Maslak / Istanbul
Phone: 90 (0212) 335 25 01
Fax: 90 (0212) 335 25 00

Asia / Pacific
AUSTRALIA
Amphenol Australia Pty Ltd
2 Fiveways Blvd., Keysborough
Melbourne, Victoria
3173 Australia
Phone: 613 8796 8888
Fax: 613 8796 8801
E-mail: info@amphenol.com.au

CHINA
Amphenol China,
Room C2, 26/F, Block C
Electronics Science & Technology
Building
2070 Shennan Road
Shenzhen, China 518031
Phone: 86-755-8368 3575
Fax: 86-755-8368 3567

HONG KONG
Amphenol East Asia Ltd.
2201 Railway Plaza
39 Chatham Road South
Tsmishatsui, Kowloon, Hong Kong
Phone: 852-2699-2663
Fax: 852-2691-1774

INDIA
Amphenol Interconnect India Pvt, Ltd
105, Bhosari Industrial Area
Pune, 411 026, India
Phone: (91-20) 27120-481
Fax: (91-20) 27120-581
E-mail: sales@amphenol-in.com

JAPAN
Amphenol Japan Mil/Aero & Industrial
471-1, Deba, Ritto-city
Shiga 520-3041, Japan
Phone: 81-77553-8501
Fax: 81-77551-2200

KOREA
Amphenol Daeshin
#558 SoSa, SongNae
Bucheon City, Kyunggi-Do
Korea 420-130
Phone: 82-32-610-3800
Fax: 82-32-673-2507

SINGAPORE
Amphenol East Asia, Ltd.
#25-07, The Concourse
300 Beach Road, Singapore 199555
Phone: 65-2942128
Fax: 65-2943522

TAIWAN
Amphenol Taiwan
No. 116, Lane 956, Zhong Shan Rd.
Taoyuan City, Taiwan R.O.C. 330
Phone: (886-3) 379-5677
Fax: (886-3) 360-7259

Notice: Specifications are subject to change without notice. Contact your nearest Amphenol Corporation Sales Office for the latest specifications. All statements, information and data given herein are believed to be accurate and reliable but are presented without guarantee, warranty, or responsibility of any kind expressed or implied. Statements or suggestions concerning possible use of our products are made without representation or warranty that any such use is free of patent infringement and are not recommendations to infringe any patent. The user should not assume that all safety measures are indicated or that other measures may not be required. Specifications are typical and may not apply to all connectors.